



HARBOR  
WILDWATCH

## Rockin' Around the Clock:

Exploring diel activity  
differences in Young of Year  
Rockfish in the Salish Sea

South Sound Science Symposium 2024

Presented By:

**Stena Troyer, Science Director**  
**Harbor WildWatch**







HARBOR  
WILDWATCH

# MISSION & MOTTO

**Education & Outreach**  
**Participatory Science**  
**Marine Life Center**

**Learn.**  
**Have Fun.**

## Mission

Harbor WildWatch is dedicated to inspiring stewardship of the Puget Sound and greater Salish Sea by providing learning opportunities to the people of our local community and beyond.





# Rockfish

28 Species in the Salish Sea

Long lived and slow to reproduce

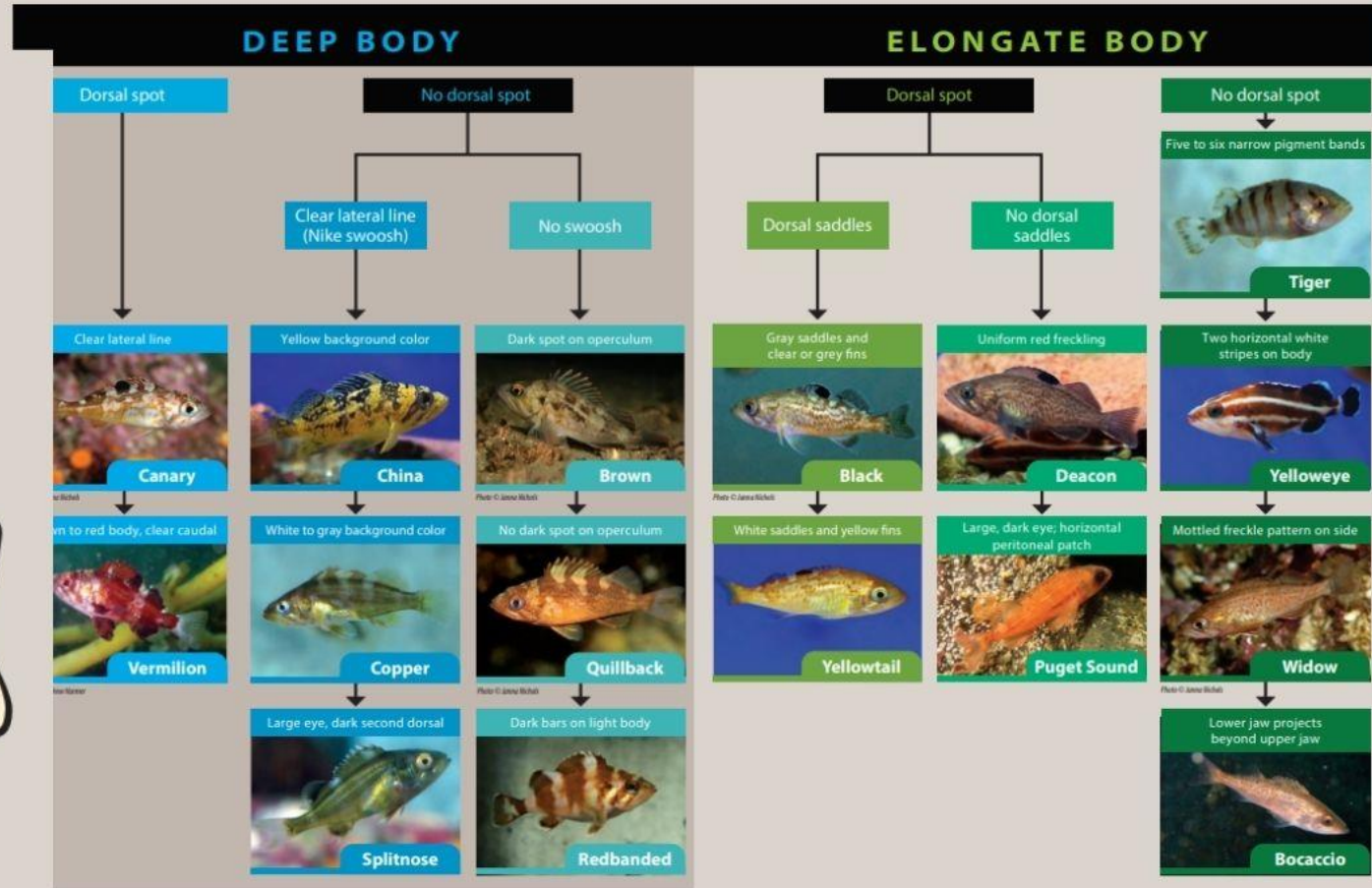
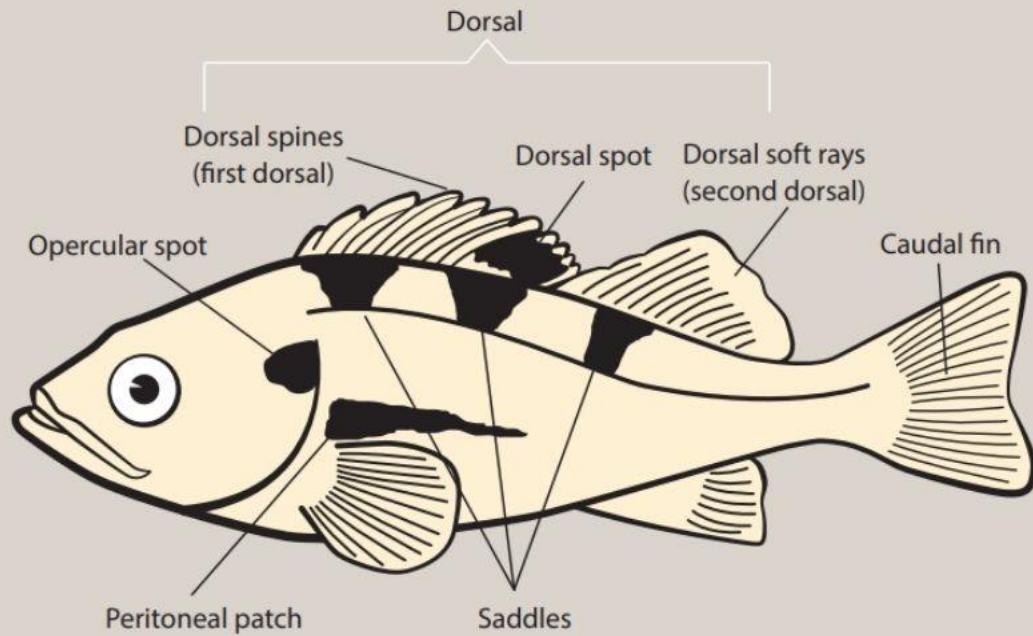
Commercially Important

Overharvest has led to listings  
of certain species





# Young-of-Year Rockfish





# Young-of-Year Monitoring

## Diel Comparisons

### Roving Surveys



### Time Lapse Cameras





# SCUBA SURVEYS

## Timed roving surveys based on depth and habitat type Involving recreational divers since 2014!

### You can help save endangered rockfish!

NOAA is trying to learn about long-term trends in juvenile rockfish and needs the help of citizen divers to collect data.

You can help in one of two ways:

- Report any sightings of bocaccio, yelloweye or canary rockfish to [rockfishID@noaa.gov](mailto:rockfishID@noaa.gov) and include picture, location and date information.
- Participate in the broader monitoring program outlined in this pamphlet and collect data during your regular dive trips in Puget Sound.

**SAFETY FIRST!** Participation is purely voluntary and not affiliated with the NOAA dive program.

#### SAMPLING METHOD:

Surveys are completed using a timed roving dive survey: Divers swim through a single habitat type and record young-of-year (YOY) rockfish by two morphological traits (body shape and dorsal spot presence/absence), basic habitat information and the survey duration.

A more detailed methods document and datasheets are available on the NOAA website at [westcoast.fisheries.noaa.gov/protected\\_species/rockfish/citizen\\_science\\_yoy\\_rockfish\\_photo.html](http://westcoast.fisheries.noaa.gov/protected_species/rockfish/citizen_science_yoy_rockfish_photo.html), or scan the QR code on the back.

#### SURVEY ZONE:

One habitat type and depth bin.

#### SURVEY PATH:

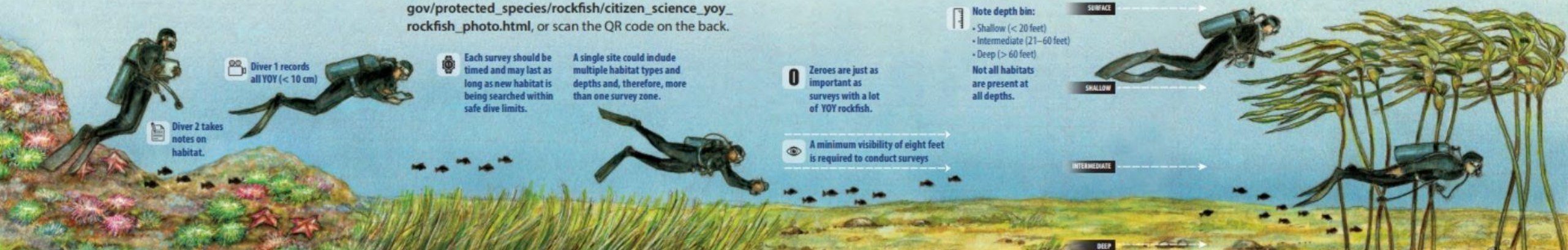
One meter on each side of swimming path and one meter off the substrate.

Share your results at [rockfishID@noaa.gov](mailto:rockfishID@noaa.gov)

TIP

For surveys in kelp habitats that reach the surface, a survey should be run through the canopy (<2m from surface) for every survey along the bottom.

If kelp doesn't reach the surface, do a second survey at that depth.



Diver 2 takes notes on habitat.

Diver 1 records all YOY (< 10 cm)

Each survey should be timed and may last as long as new habitat is being searched within safe dive limits.

A single site could include multiple habitat types and depths and, therefore, more than one survey zone.

Zeroes are just as important as surveys with a lot of YOY rockfish.

A minimum visibility of eight feet is required to conduct surveys

ROCKY REEF SURVEY ZONE

EELGRASS SURVEY ZONE

SOFT BOTTOM SURVEY ZONE

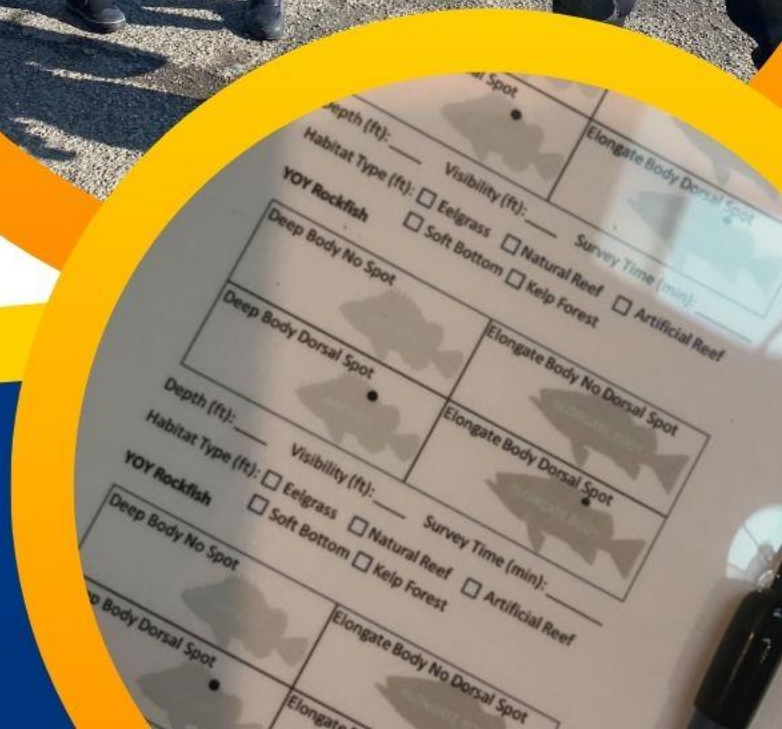
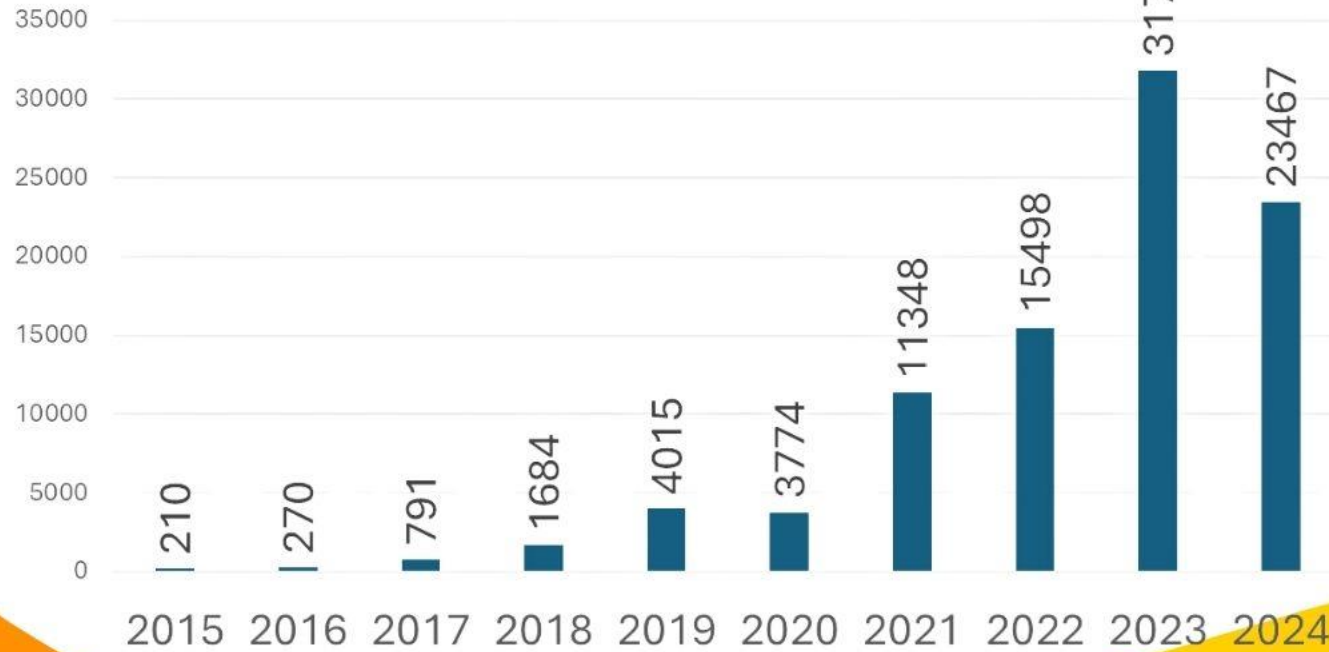
KELP FOREST SURVEY ZONE



# SCUBA Surveys

As of end of September 2024

## Total Survey Minutes



Quantifying the Investment Period in a novel Citizen Science Program:  
A Case Study from Cold Water SCUBA Surveys



# Diel Dives

Comparing fish activity at sites in the day vs night





# Diel Dives

As of end of September 2024

**30 Diel Dives at 13 Sites**

**318 transects**

**Over 2665 survey minutes**

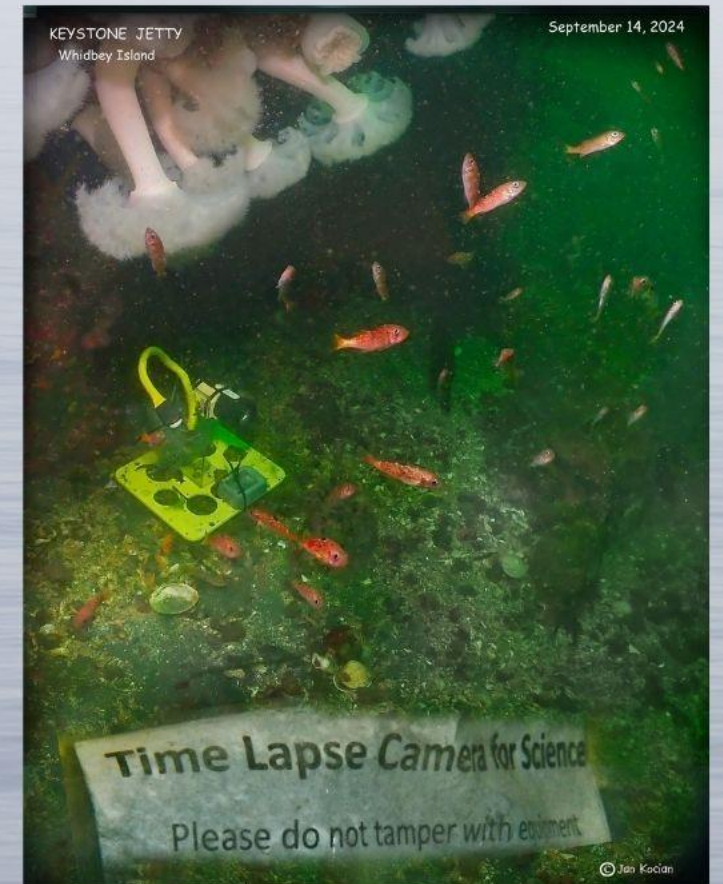
**Significant difference for certain species**





# Time Lapse Cameras

Capture a photo every ten minutes for duration of deployment





# Time Lapse Cameras

As of end of September 2024

**13 out of 39 deployments processed**

**Over 19,000 images reviewed to date**

**No difference in encounter rate detected across diel periods**



Washington  
Department of  
**FISH and  
WILDLIFE**



Cheers to camera guru Bill too!





# Preliminary Results

Teamwork makes the dream work - increased involvement, increases data



- **This work REQUIRES a Buddy**  
Volunteers ROCK
- **Diel Dives**  
Significant difference for certain species
- **13/39 TLC Deployments Analyzed**  
No difference in encounter rate detected across diel periods
- **Informing Rockfish Recovery**  
Results will improve the long-term monitoring protocol



# Conclusion

Results will refine quantitative analyses and improve the long-term monitoring protocol as it informs rockfish recovery in the Salish Sea.





# SCUBA Rockfish Surveys



**PMRG**

PAUA MARINE RESEARCH GROUP



And MORE!!!



**HARBOR  
WILDWATCH**










HARBOR  
WILDWATCH

# Thank You

Learn. Have Fun.

## Contact:

**Stena Troyer, Science Director**

-  [www.harborwildwatch.org](http://www.harborwildwatch.org)
-  [stena@harborwildwatch.org](mailto:stena@harborwildwatch.org)
-  Gig Harbor, (the other) Washington





# Salish Sea





# Salish Sea

